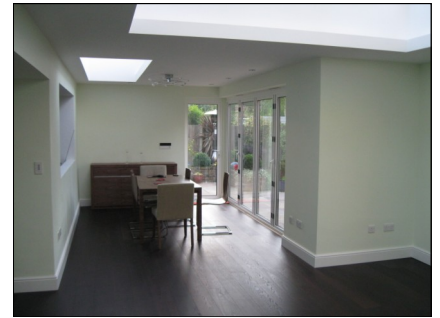


# Bickley Park Road Bromley

Craymanor Limited were absolutely delighted to work on this local Architect designed home extension which comprised a two storey extension over the existing garage enabling the existing two bedrooms to be provided with a Jack & Jill en-suite and dressing room.

The scheme also included for the creation of a dramatic single storey orangery room complete with top of the range concertina doors opening out to the garden at the rear of the property, giving this fantastic dining and living space a light, open and airy feel.

Our client, a well known local Accountant was absolutely delighted with the project which has achieved everything they had hoped for and was completed by Craymanor Limited offering a beautiful contemporary home which has substantially increased in value and usability.



BEFORE

## CRAYMANOR LIMITED

Construction, Building and Consultancy  
Samuel House, 1-3 Woodside Road  
Sidcup, Kent DA15 7JF  
Tel: 020 8302 4415

E-mail: [sales@craymanor.co.uk](mailto:sales@craymanor.co.uk)  
[www.craymanor.co.uk](http://www.craymanor.co.uk)



**Chartered  
Building  
Company**